

World class corrugated cardboard box and packaging solutions...

CONTACT

Address : Ömerli Mahallesi Hakkı İleri Cad. No:52
PK: 34555 ARNAVUTKÖY / İSTANBUL / TÜRKİYE
Phone : +90 212 596 84 25
Fax : +90 212 596 45 36
E-mail / Web : export@atessan.com.tr - www.atessan.com

Your reliable business partner
for 46 years...

ATEŞSAN
COMPANY PROFILE



ATEŞSAN®
CORRUGATED PACKAGING



ATESSAN[®]
CORRUGATED PACKAGING

RELIABLE, FAST AND HIGH QUALITY
BOX AND PACKAGING SOLUTIONS...



BEING THE
GREAT
COMPANY

ATEŞSAN PRODUCTION LINE

The production facility has a covered area of 26,000 sq. meters. Products range from small to large sizes, all quality and printing types. Our company produces packaging material and corrugated boxes to over 1,000 companies in different industries ranging from manufacturing of furniture, textiles, polymers, household appliances, to food and fresh produce packaging companies to pizza restaurants.

Our facility has one high-tech and high capacity corrugated cardboard production line in addition to seven inline box machines and one offset printing machine. We produce all kinds of boxes, with or without cuts, printed or plain.

100.000
ton

12 month
365 day

STATISTICAL DATA

26.000 m²
closed area

1000+ happy
customers

Istanbul region
largest production
facility capacity

1.

4.0 Industry 4.0 Fully
Integrated Factory



Second 500 companies
of Istanbul Chamber
of Industry

special
projects

R&D
design

We are at your service with
our sales and after sales
team of 20 employees.

20+

9 1 corrugated board
7 pcs inline box
1 pcs offset printing

450+

employees

Ateşsan Production Policy

Improving the world for present and future generations by using renewable resources to manufacture products people use everyday.

We are determined to make the world sustainable. We give utmost priority to our employee's health and security; we ensure that every phase of our supply chain is carried out in a secure and responsible manner, from purchase to production, distribution to sales and recycling.

Ateşsan produces corrugated cardboard solutions for more than 1000 companies from different industries.

Major Appliance Corrugated Boxes

Furniture Protection Corrugated Boxes

Food Corrugated Boxes

Plastic Materials Corrugated Boxes

Electronic Device Boxes

Fresh Produce Boxes

Pizza Boxes

Shoe Boxes and Corrugated Boxes

Textile Boxes and Corrugated Boxes

CORRUGATED BOARD IS OUR PASSION

Ateşsan Corrugated Board, quality and continuity since 1972...

Ateşsan has started its operations in 1972 and has been active in the corrugated cardboard box sector with 46 years of experience. Production is carried out in the new Istanbul Arnavutköy facility established in 2015 with the annual production capacity of 100.000 tonnes. Istanbul facility has the highest capacity among others in the Marmara Region and is one of the biggest manufacturing facilities in Turkey.

Ateşsan has the most advanced machinery in the production and implements latest quality management principles to obtain the best quality. Production is carried out with the latest automation technology and the R&D department constantly works on Industry 4.0 applications to improve the production technology.

WE PRODUCE THE BEST CORRUGATED CARDBOARD AND PACKAGING

Ateşsan has a fully integrated and skilled manpower in the entire process, from supply to delivery. With many years of experience in production activities supported by qualified sales service personnel and quality control management, Ateşsan continues its activities paying the utmost attention to customer satisfaction.

Ateşsan is a solution partner to all customers. The design department offers the most affordable and optimal solutions according to the needs.

Our core principle is to deliver the right product with highest quality to the customer on time and on budget. We are aware of the fact that the packaging we manufacture will add value to your products.

As one of the leading companies in the corrugated cardboard industry in Turkey, Ateşsan will keep on generating employment and continue its investments as one of the leaders in the industry by developing its know-how in the corrugated cardboard production with an affordable price policy, meeting deadlines, assuring quality and customer satisfaction.

Ateşsan Quality Policy:

- » Ensuring that the job is executed correctly the first time with customer-oriented work ethics.
- » Progressing by constantly increasing customer satisfaction.
- » Increasing the quality of the products by constantly improving the process management and keeping the quality assurance system under control by continuous inspection.
- » Training and motivating employees and encouraging them to participate in quality policy and quality awareness related education.
- » Staying up to date with environmental and occupational health safety regulations and taking all precautions within this scope.

Our goal is to embrace quality as a purpose and ensure its continuity.

Ateşsan has Quality Management System, Energy Management System and Occupational Health and Safety System Certificates.

Our Mission

By selecting environment, human health and safety as our baseline, we deliver the most accurate quality product to the customer on time, on budget. In order to ensure this, our main principle is selecting the best suppliers, the most suitable production and distribution process and continuously improve ourselves.

Our Vision

To be an international brand with a fully integrated production structure that exports its products to many countries.

Pizza Box



Pizza Box



Pizza Box



Packaging

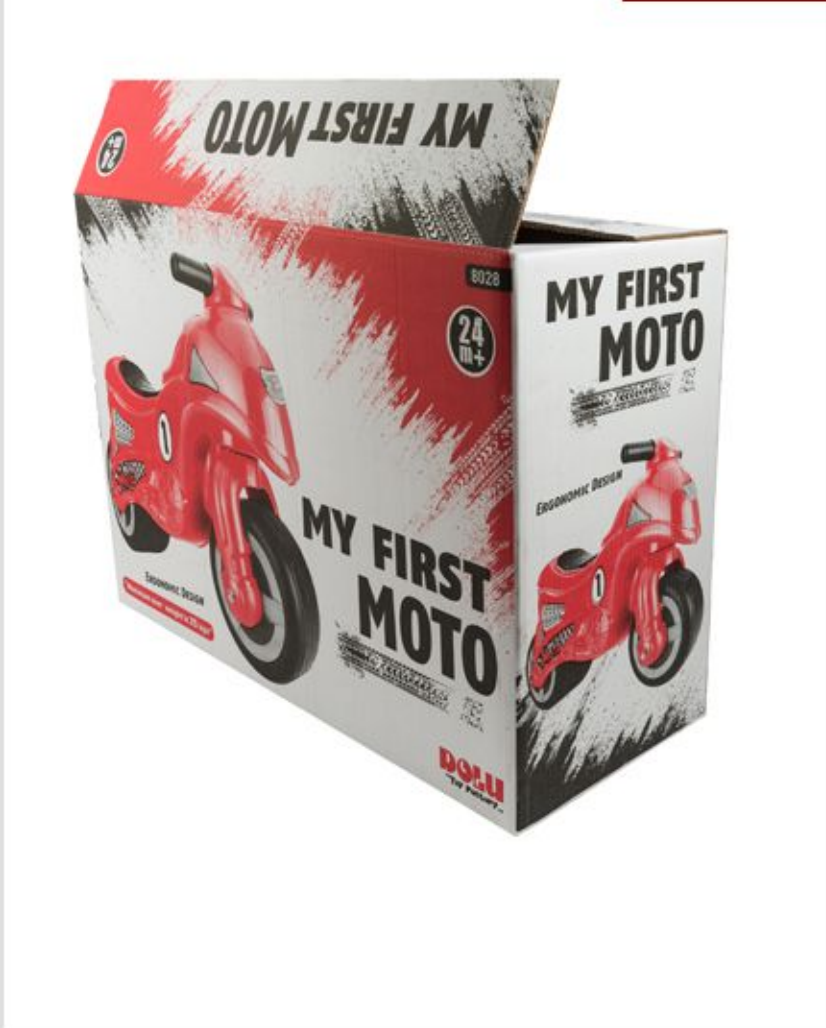


Packaging



Corrugated Board

Corrugated Board



Packaging



Packaging



Packaging



Packaging

ATEŞSAN PRODUCT GROUPS

KRAFT LINER

It is a type of high strength paper produced from long fibered, softwood trees such as pine, fir or spruce. Kraft paper is usually produced in darker, natural colours.

WHITE TOP

Kraft paper can be produced in entirely white or white on top by using cellulose, which is called White Top. Bursting strength value as an indicator of their durability ranges between 3,5-5 kP or weighs between 100-450 gr/sqm.

TEST LINER

Two or three ply liner paper produced by adding brown or white, first or second grade fiber to recycled paper fiber. In todays recycle conscious environment, this testliner is frequently used in various industries. Bursting strength values ranges between 2-3,5 kPa or weighs between 90-125 gr/sqm.

WHITE TESTLINER

Produced by using white cellulose on the outer layer.

NSSC

Produced by a partially mechanical and chemical process using short fibers from hardwood trees such as birch, silver birch and eucalyptus. This product is being used as the corrugation layer of the cardboard boxes.

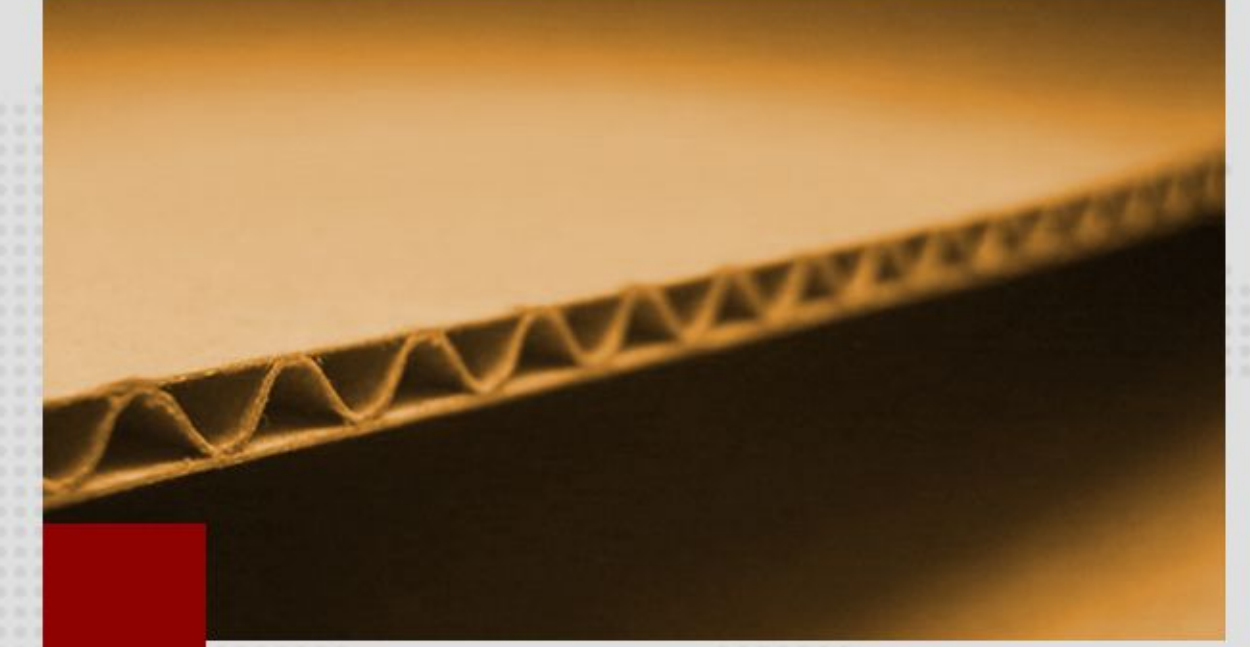
RECYCLED PAPER

Fluting paper produced from 100% recycled paper. Weight ranges between 75/220 gr/sqm.



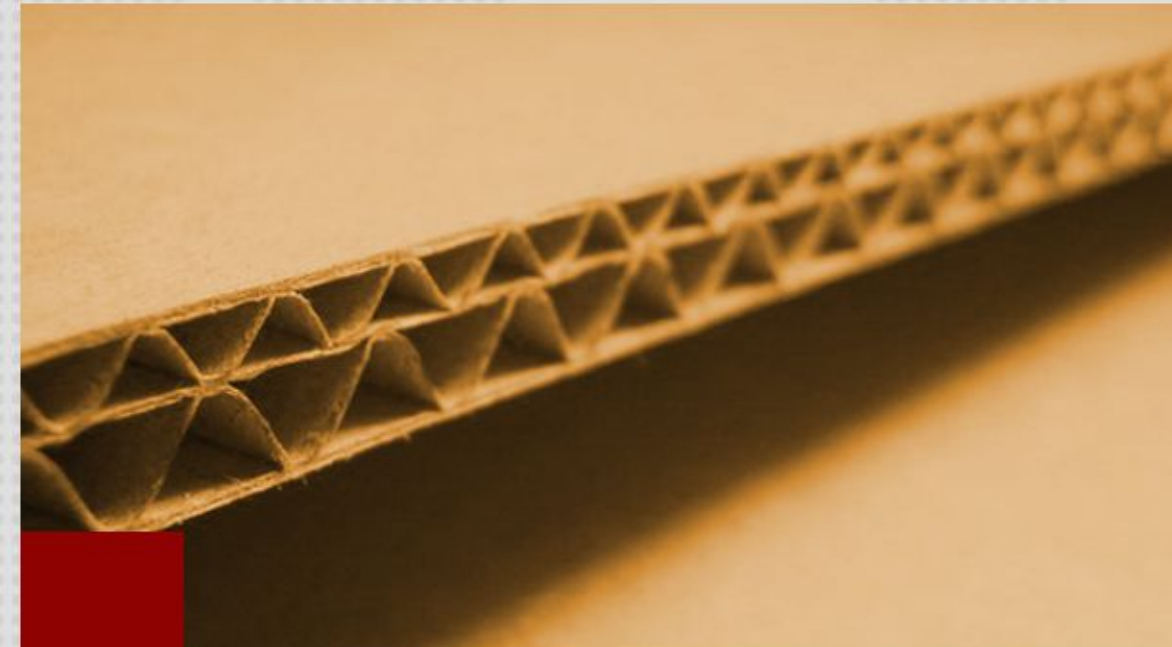
Single Face Board

A single medium is glued to one flat sheet of linerboard. Used in offset-printed Works and protect breakable products within boxes or packaging. Commonly used in E or B Type of flute.



Single Wall Board

The medium is between two sheets of linerboard. All of the walled corrugated products are suitable for boxes and packaging as the smooth exterior surfaces ensure that they are easily stacked for efficient storage and shipping. E Flute Single Wall Board; due to the high number of flutes in a meter, it has excellent surface crush strength end gives the best result in printing. B Flute Single Wall Board; It is used in the packaging of all kinds of products, especially the products which are also carrier product itself and in the production of mould boxes.It is extremely resistant to surface crushing and gives a very good result in printing. C Fulte Sing Wall Board ; It is a good carrier and it gives good result in printing.It is used in the packaging of many products including fresh vegetables, is very common.



Double Wall Board

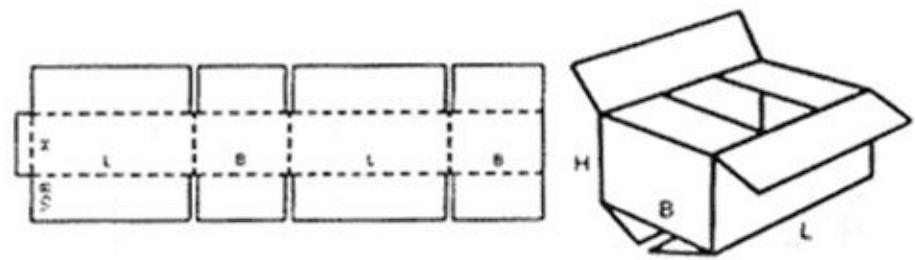
Double wall corrugated board consist of two fluted papers and three liner papers. Due to its strong structure , it is used for heavy items and for large stacks in warehouses and shipping containers. BE Double Wall Board ; It is a good carrier and it gives good result in printing. BC Double Wall Board ; It has stronger structure from BE double wall board .



Triple Wall Board

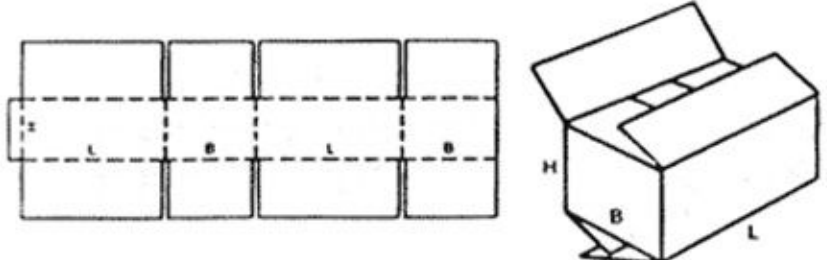
Triple wall corrugated board consist of three fluted papers and five liner papers . It is used for maximum strength and protection. Triple wall cardboard is commonly used for heavy products cargoes. It is commonly consist of A,B and C flutes.

FEFCO STANDARDS



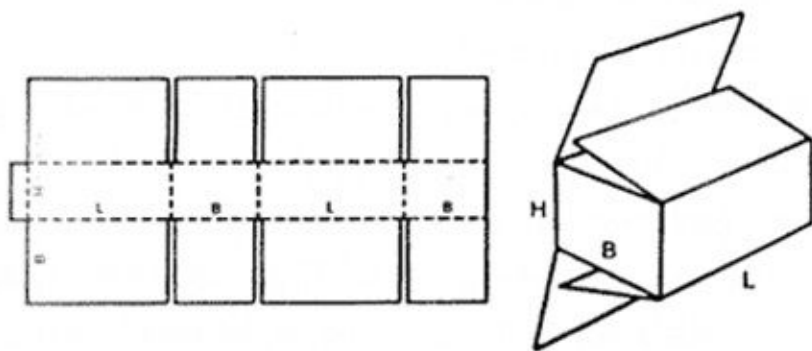
0201 Regular Slotted Box

Regular Slotted Box has flaps of the same length.



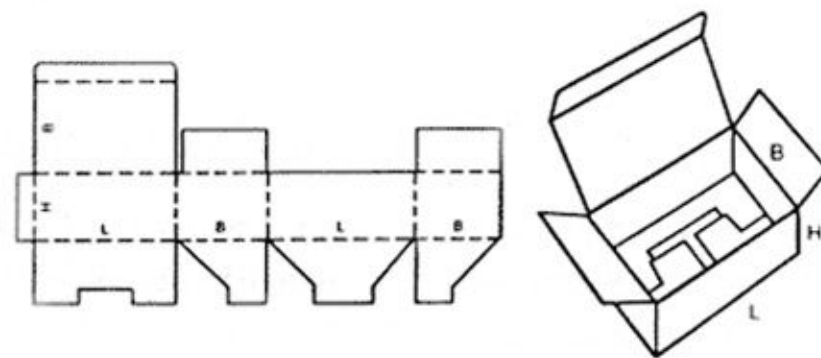
0202 Overlap Slotted Box

Different from the Regular Slotted Box the flaps are slightly longer at the desired dimension so that the outer flaps overlap on each side.



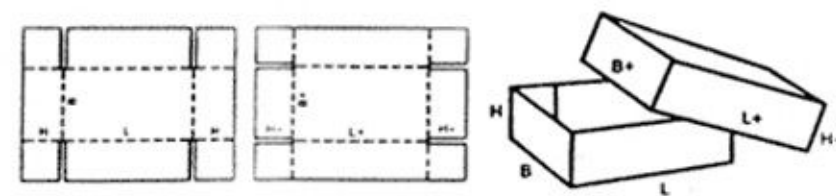
0203 Full Overlap Slotted Box

A Regular Slotted Box with the both sets of outer flaps overlapping to the full width of the container making this box resistant to collapsing.



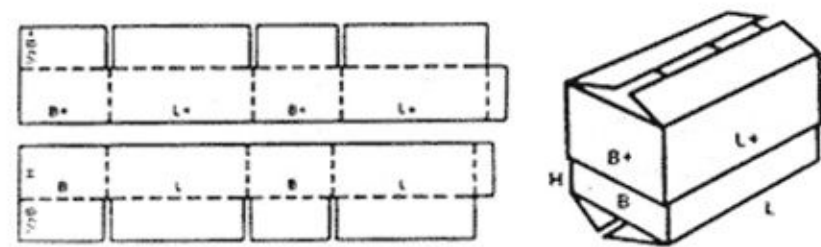
0215 Envelope Base Box

This style of box has a tuck in top and a base that locks together and is usually glued at the manufacturing facility.



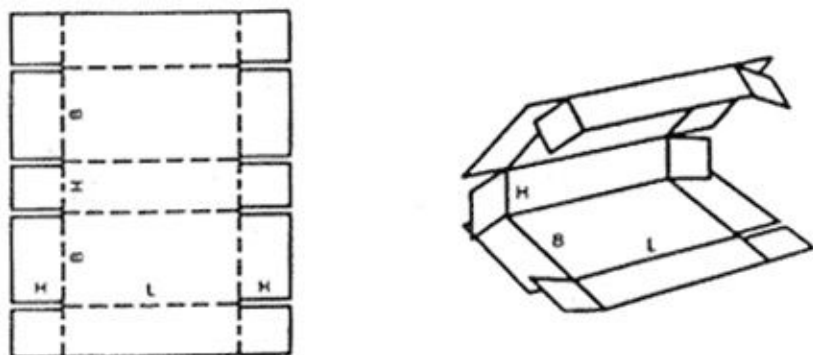
0301 Telescopic Tray

Either fitting or standard size these boxes fit over each other or a separate body and are shipped flat.



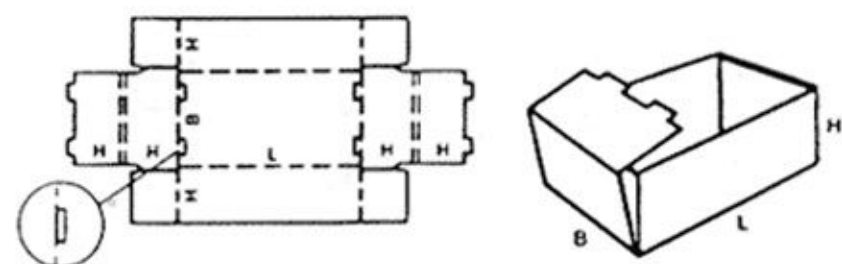
0320 Telescope Design Box

This style of box consists of two FEFCO 0200 type boxes and are combined by a flap and/or bottom telescoping over the body of the box.



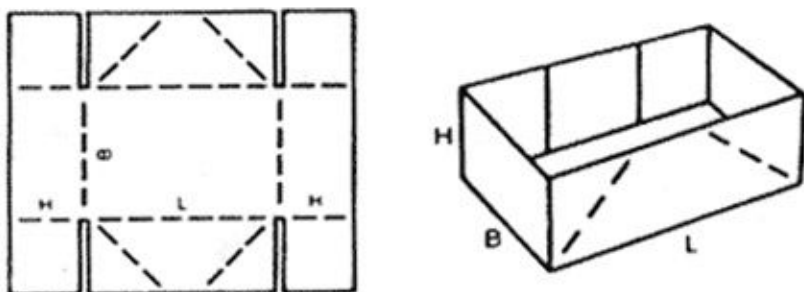
0409 One Piece Folder Type Box

Usually used with automated packaging machinery, this box serves a variety of uses ranging from household items to meat packaging.



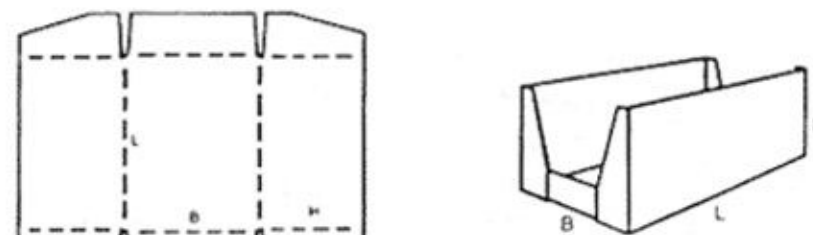
0422 Self Locking Tray

A fitting type tray which can be used as a closed lid with other box types. It can be also used as open lid manually folded by the end user if automatic filling is not permissible. Stackable when loaded with product, it is a sturdy box.



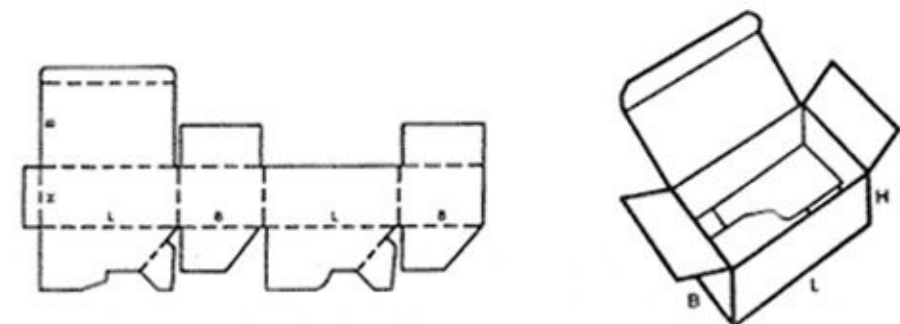
0451 Four Points Glued Tray

A fitting type tray delivered to the customer after four corners are glued together at the manufacturer. Used as a lid in combination with other type of boxes as well.



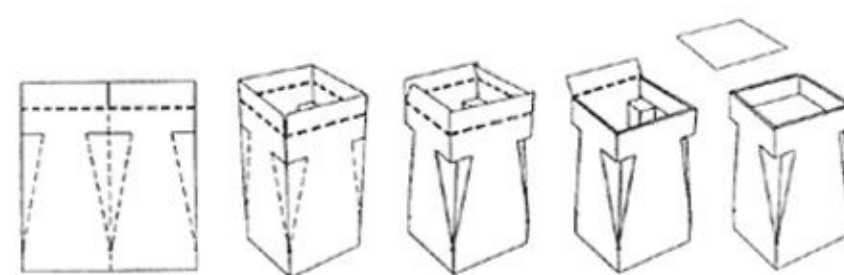
0460 Automatic Filling Tray

A fitting type tray used in packaging of alcoholic and non-alcoholic beverages. It is an economical type box with a wide spread use.



0713 Crash Lock Base Box

A fitting type box with a pre-glued base which is shipped flat and can be erected easily. Usually produced from single wave corrugated cardboard.



Display Booths

In high demand by big store chains, these booths are used for display, demonstration or carriage.

